

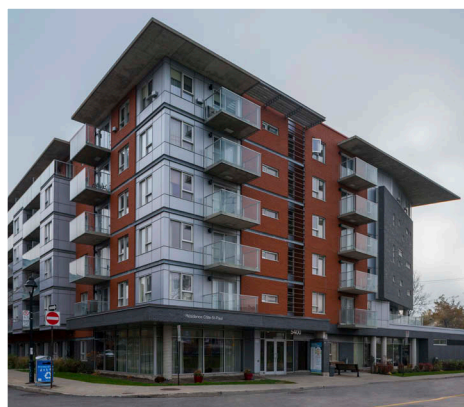
Résidence

Côte-Saint-Paul

Saint-Henri



An affordable residence for independent seniors right by the Lachine Canal



LES RÉSIDENCES
ENHARMONIE
Office municipal d'habitation de Montréal

aging well in Montreal

— What you'll love about the residence —

Our services

Your rent includes five hot lunches a week in the dining hall, a light breakfast on Saturdays and Sundays, Internet access in the common room, free use of the laundry rooms, a library, a beautiful landscaped backyard and lots more.



Meals

Having a good meal in the dining hall means enjoying a varied, balanced menu without having to cook everything yourself. Choose your table and let our friendly staff serve you.



Pets

If you own a cat or a small dog, you can bring it with you to Côte-Saint-Paul. Tell us about your pet during your visit so that we can work out together how to integrate it while respecting the well-being of all residents.

Security



"Security is not just about magnetic cards for the doors."

An employee is on site 24 hours a day, 365 days a year. Just dial zero for assistance.

- Access controlled by magnetic card ■ Receptionist on duty every day
- Security cameras ■ 24-hour surveillance

Our activities



Can we interest you in a dance class, a concert, knitting or an arts class? How about a themed evening? Join any activities that catch your eye.

It's the little extras and small pleasures

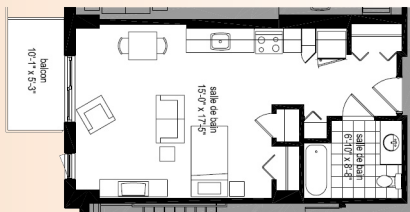


Internet in your apartment (\$), hair salon (\$), interior parking (\$), room rental (\$)

For some of our residences, a pharmacy might be located on the premises or nearby. At all times, our residents are free to choose the pharmacist who best meets their health-care needs.

Our apartments

Well-designed, spacious and bright studios, 1-bedroom and 2-bedroom apartments, with storage. Telephone line, cable TV, electricity, heat and hot water are included in your rent.

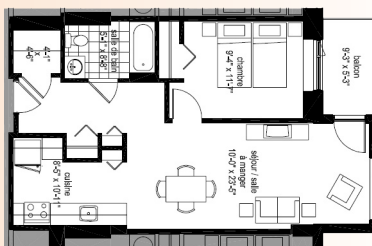


1 ½

Between \$918 and \$1,000 after tax credit. *

Approximately 450 sq.ft. (42 m²).

- bedroom/living room
- kitchen and dining area
- bathroom ■ storage space
- hallway ■ balcony

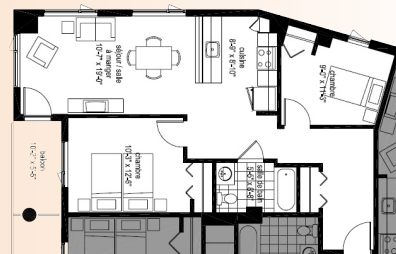


3 ½

Between \$1,062 and \$1,225 after tax credit. *

Approximately 600 sq.ft. (56 m²).

- bedroom ■ living room
- kitchen and dining area
- bathroom ■ storage space
- hallway ■ balcony



4 ½

Between \$1,512 and \$1,696 after tax credit *

Approximately 760 sq.ft. (71 m²).

- two bedrooms ■ living room
- kitchen and dining area
- bathroom ■ storage space
- hallway ■ balcony

* Moving to a residence of the ENHARMONIE network can make you eligible for a tax credit for home-support services for seniors 70 or older. You could also be eligible for financial assistance through the shelter allowance program for low income households. The ENHARMONIE residence employee will help you figure it out.

Eligibility criteria

You must meet all of the following conditions to live in a residence of the ENHARMONIE network:

- Your annual income is less than \$30,000** (for one person or a couple) or \$34,500** (for two people not living as a couple).
- You are a Canadian citizen or permanent resident.
- You are a Quebec resident.
- You are 60 years of age or older (applies to all household members).

** A quarter of the apartments in each residence can be rented to people whose income exceeds the maximum eligible amount. If this is your case, please call the residence of your choice and talk to our client relations agent about our availabilities.

Certification

Our residences are certified by the Ministère de la Santé et des Services sociaux du Québec.

Our services are intended for independent seniors and do not include nursing care or personal support services.

— What you'll like about the neighbourhood —



Right by the Lachine Canal

Few Montrealers can enjoy a walk along the Lachine Canal every day.

Located just 150 m from Résidence Côte-Saint-Paul, this linear park crosses the entire neighbourhood. More than just a nice place for a Sunday walk, it is used by residents to get to work or go shopping along the neighbouring streets.

If you want to leave nature behind, head to the more active and urban Notre-Dame Street. It has a municipal library and many local businesses. Coffee shops and snack bars have dotted the street in Saint-Henri for more than 25 years. A true love story between the neighbourhood and the people who live there.

More avid walkers can get to the famous Atwater market, with its fruit and vegetable stands, fine products and treats.

Come see us

Résidence Côte-Saint-Paul | Make an appointment or walk in | 7 days a week, from 9 a.m. to 5 p.m.
514 933-2940 | info.csp@omhm.qc.ca | 5400, chemin de la Côte-Saint-Paul, Montréal (Qc) H4C 0A4

Discover all our residences: www.residencesenharmonie.ca/en