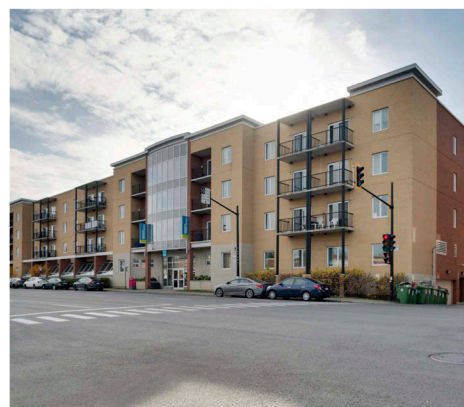


Résidence Rosalie-Cadron

Cartierville



An affordable residence for independent seniors half-way between nature and city life



LES RÉSIDENCES
ENHARMONIE
Office municipal d'habitation de Montréal

aging well in Montreal

— What you'll love about the residence —

Our services

Your rent includes five hot lunches a week in the dining hall, a light breakfast on Saturdays and Sundays, Internet access in the common room, free use of the laundry rooms, a library, a home theatre, a fitness area and lots more.



Meals

Having a good meal in the dining hall means enjoying a varied, balanced menu without having to cook everything yourself. Choose your table and let our friendly staff serve you.



Pets

If you own a cat or a small dog, you can bring it with you to Rosalie-Cadron. Tell us about your pet during your visit so that we can work out together how to integrate it while respecting the well-being of all residents.

Security



"Security is not just about magnetic cards for the doors."

An employee is on site 24 hours a day, 365 days a year. Just dial zero for assistance.

- Access controlled by magnetic card
- Receptionist on duty every day
- Security cameras
- 24-hour surveillance

Our activities



Can we interest you in a movie night, a mandala workshop or a bocce tournament? You are looking to attend mass or shop at a pop-up store? Join any activities that catch your eye.

It's the little extras and small pleasures

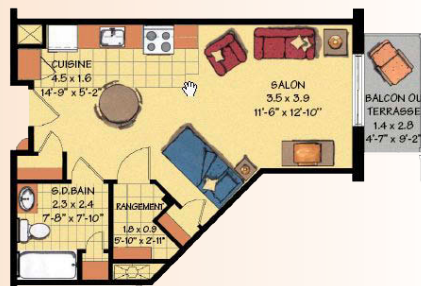


Internet in your apartment (\$), hair salon (\$), interior or exterior parking (\$), room rental (\$)

For some of our residences, a pharmacy might be located on the premises or nearby. At all times, our residents are free to choose the pharmacist who best meets their health-care needs.

Our apartments

Well-designed, spacious and bright studios, 1-bedroom and 2-bedroom apartments, with storage. Telephone line, cable TV, electricity, heat and hot water are included in your rent.

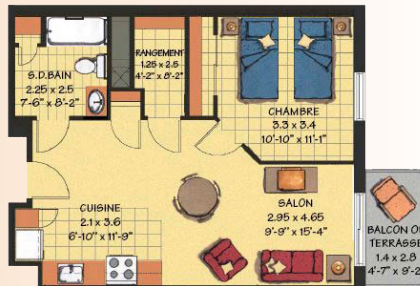


1 ½

Between \$850 and \$923 after tax credit. *

Approximately 460 sq.ft. (43 m²).

- bedroom/living room
- kitchen and dining area
- bathroom ■ storage space
- hallway ■ balcony



3 ½

Between \$939 and \$1,146 after tax credit. *

Approximately 580 sq.ft. (54 m²).

- bedroom ■ living room
- kitchen and dining area
- bathroom ■ storage space
- hallway ■ balcony



4 ½

\$1,399 after tax credit. *

Approximately 836 sq.ft. (78 m²).

- two bedrooms ■ living room
- kitchen and dining area
- bathroom ■ storage space
- hallway ■ balcony

* Moving to a residence of the ENHARMONIE network can make you eligible for a tax credit for home-support services for seniors 70 or older. You could also be eligible for financial assistance through the shelter allowance program for low income households. The ENHARMONIE residence employee will help you figure it out.

Eligibility criteria

You must meet all of the following conditions to live in a residence of the ENHARMONIE network:

- Your annual income is less than \$30,000** (for one person or a couple) or \$34,500** (for two people not living as a couple).
- You are a Canadian citizen or permanent resident.
- You are a Quebec resident.
- You are 60 years of age or older (applies to all household members).

** A quarter of the apartments in each residence can be rented to people whose income exceeds the maximum eligible amount. If this is your case, please call the residence of your choice and talk to our client relations agent about our availabilities.

Certification

Our residences are certified by the Ministère de la Santé et des Services sociaux du Québec.

Our services are intended for independent seniors and do not include nursing care or personal support services.

— What you'll like about the neighbourhood —



Cartierville: half-way between nature and city life

Living here, you will have one foot in town and the other...practically in the water. Capped by Rivière-des-Prairies to the north, Cartierville draws as many young families as it does seniors from all walks of life.

People settle in this neighbourhood for its affordability and the calm of its green spaces, but they soon discover that it is very cosmopolitan, with many grocery stores, coffee shops and multi-ethnic restaurants that will take you to all four corners of the world! And who hasn't heard of the famous Belmont Park, an amusement park that was part of so many people's childhoods between 1923 and 1983? A few blocks from the residence, the L'Attente sculpture by Guillaume Lachapelle is a reminder of the happy times many generations of thrill ride seekers spent there.

In terms of convenience, the Sacré-Coeur hospital is nearby on a large wooded lot. And if you like biking, you can take the bike path along Gouin Boulevard to wind your way through parks and neighbourhoods. The Navette Or shuttle stops at the door of the residence, and the Côte-Vertu metro station, accessible by bus, is your link to downtown Montréal.

Come see us

Résidence Rosalie-Cadron | Make an appointment or walk in | 7 days a week, from 9 a.m. to 5 p.m.
514 956-7422 | info.rc@omhm.qc.ca | 12260, boul. Laurentien, Montréal (Qc) H4K 2Z4

Discover all our residences: www.residencesenharmonie.ca/en